

Magnolia Collection

VanDusen Garden – South Surrey Garden Club Tour

There are three main areas in the Garden featuring magnificent magnolias: Woodland Garden, Fern Dale and Magnolia & Hydrangea Garden. Most bloom in March but can be easily missed if do not know where to look.



M. macrophylla – Large leaf cucumber



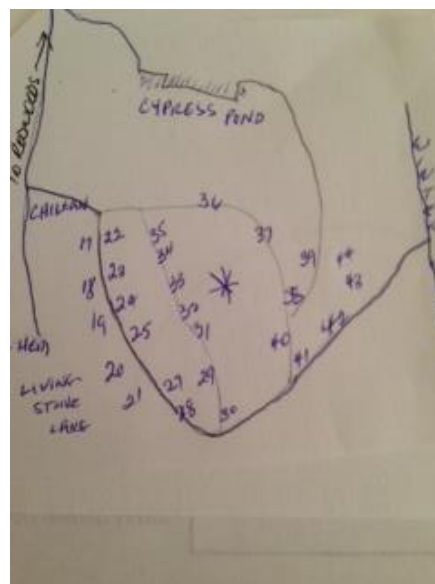
Fall treat for squirrels

WOODLAND GARDEN

17. *M.* 'Tranquility' 2008
18. *M.* 'Serene' 1999
19. *M.* 'Sunburst' 2008
20. *M.* 'Leonard Messel' 1986
21. *M. stellanta* 'Royal Star' 1974
22. *M. kobus* var. *kobus* 'Kobushi' 1971
23. *M. kobus* var. *borealis* 1973
24. *M. soulangeana* cv. Saucer
25. *M. sprengeri* 'Copeland Court' 1992
26. *M. x soulangeana* 'Alexandrina' 1992
27. Magnolia 'sp'
28. *M. kewensis* 'Wanda's Memory' 1992

Turn onto to path inside Woodland Garden

29. *M. sieboldii* 'Oyama' 1973
30. *M.* 'Caerhays Belle' (now removed)
31. *M. x veitchii* 1986
32. Oyama
33. Leonard Messel
34. & 35. *M. grandiflora* (Evergreen)
36. *M. brooklynensis* 'Yellow Bird' 2007
37. Leonard Messel
38. *M. grandiflora* 'Victoria' 1996
39. *M.* 'Monland'
40. *M.* 'Susan' 2008
41. *M. grandiflora*
42. *M. macrophylla* Large leaf cucumber 1990
43. *M.* 'Star Wars' 1983
44. *M. grandiflora*

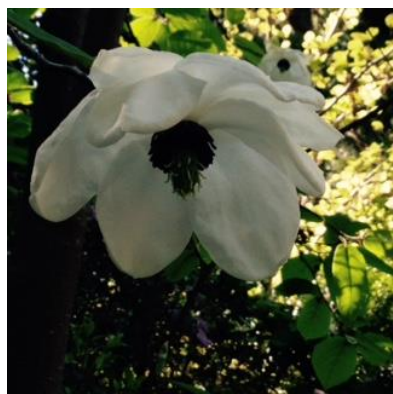


Magnolia Collection

VanDusen Garden – South Surrey Garden Club Tour



M. cavaleriei var.
platyepetala – evergreen
and wonderfully scented
white flowers. It is on
your right as enter the
Hydrangea area.



Meanderings up to the Magnolia & Hydrangea Garden

37th Ave near entrance (to your left as you drive into parking lot)

M. Caerhays Belle 1993

Opposite Dove Tree

M. x soulangeana ‘Verbanica’ 1986

½ way up Rhododendron . Walk

M. x loeberni ‘Leonard Messel’ 1986

Magnolia & Hydrangea Garden area

1. *M. x loeberni* ‘Merrill’ 1973

2. *M. cavaleriei* var. *platyepetala* 2000

3. *M. x veitchii* 1973

4. *M. x soulangeana* ‘Lilliputian’ Saucer 1973

5. Merrill

6. *M. dawsoniana*

7. *M. x veitchii* ‘Rubra’

8. Saucer

9. Merrill

Fern Dell – midway towards the maze - can also be seen on reservoir path.

10. *M. x sargentiana* var. *robusta* Sargents 1981

11. *M. x soulangeana* ‘Picture’ 1979

12. Three *M. dawsonia* ‘Barbara Cook’ 1980 up on the hill towards reservoir

Meconopsis Dell roadway

13. Sargents 1980 (closer to Fern Dell at roadway junction)

14. Barbara Cook

15. Sargents 1982

16. *M. zenii* 1996 - there are early blooming rhodo in this area

M. stellanta Star Magnolia on either end of the Perennial Garden in bed in front of yew hedge

M. sieboldin & subsp. *Sinensis* and *wilsonii* leaf first then flower later in the summer. There is a *M. Wilsonii* located south of the Blue Bean Tree and is pictured here.

This outline of magnolias in VanDusen is presented for your enjoyment only and has not been vetted by Garden staff. Over the next six weeks these trees will flower so please come back often. Be sure to look up as you walk around. Big leaf cucumber blooms in June.

Prepared by L. Anderson, Volunteer Guide Feb. 26, 2016 for South Surrey Garden Club winter tour.